

P.A.C.I.F.I.C.A. Inc.
Member Handbook



Contents.

- 4 HerStory.**
- 8 P.A.C.I.F.I.C.A. Inc.Today.**
- 10 Past presidents of P.A.C.I.F.I.C.A. Inc.**
- 13 Vision.**
- 13 Mission.**
- 13 Objectives.**
- 14 Structure and Membership.**
 - New members
 - Ordinary members
 - Termination of Membership
 - Member Benefits at a glance
 - Finance
- 16 The National Executive Committee.**
 - Election of Officers
 - National Executive Committee
 - Members Terms of Office
- 18 Annual Conference and General Meeting.**
- 19 Regional Mini Conference.**
- 20 Our Network of key stakeholders.**
- 21 Further Information.**
- 22 PACIFICA Song.**



Eti Laufiso
National President,
1986-1988

HerStory.

P.A.C.I.F.I.C.A. Inc. was established by Pacific women living in New Zealand so that we could speak with one voice and be recognised as a collective force working for a more positive involvement of Pacific people in New Zealand society.

Led by Eletino Paddy Walker, with much encouragement from Mira (later Dame Mira) Szaszy, the women of the Pan-Pacific and South-East Asia Women's Association (PPSEAWA), and others, sixteen women of different Pacific Island group backgrounds came together in Auckland to find ways and means to further their aims in 1975. The following year over 400 women assembled at the inaugural national conference, the first of its kind for Pacific women, held at the University of Auckland. As key organiser, Eletino Paddy Walker inspired them to pursue the vision of a united body which would empower Pacific women, enable them to address common issues and challenges facing them and their families more effectively, and bridge the gap between what was necessary and what was possible.

From these small beginnings our organisation developed, known at first as the Pacific Women's Council. The second national conference, held at Victoria University of Wellington in February 1977, ratified a constitution, elected the first national executive with Walker as president (1977–1980), and accepted the name PACIFICA. In 1978 PACIFICA became an incorporated society.

In 1979, the PACIFICA Educational Trust Fund was set up; by 1980 members had raised enough money to award 119 bursaries. Administered and subsidised dollar for dollar by the Pacific Islands Polynesian Education Foundation (PIPEF), with two members of P.A.C.I.F.I.C.A. Inc. on the allocation committee, these bursaries encouraged many students to complete their secondary education and continue on to tertiary institutions.

P.A.C.I.F.I.C.A. Inc. promoted the languages of the Pacific as well as sound knowledge of English. At a national convention on early childhood education in 1983, where Poko Morgan led a workshop on Pacific perspectives, the decision was made to lobby for and promote more Pacific preschools. In 1986, the Department of Education put a proposal to the Bernard van Leer Foundation, requesting support for a home-based intervention programme in early childhood education for Pacific communities in New Zealand. This led to the Anau Ako Pacific project, a joint venture involving the foundation, the department, PIPEF and P.A.C.I.F.I.C.A. Inc. (though PIPEF later withdrew). In 1989, in partnership with the New Zealand Childcare Association P.A.C.I.F.I.C.A. Inc. launched a training programme for supervisors of language nests. By 1993 over 70 women had graduated, 50 more were being trained, and about 120 preschools were operating.

In the early 1990s, P.A.C.I.F.I.C.A. Inc. had 45 branches, a national office based in Wellington, and the ability to recruit a project co-ordinator for Community Employment Group training. Pacific women had also learnt the pathways to political participation (and that politics was not simply a male domain). Clear evidence for this came in the 1999 election, when Luamanuao Winnie Laban became New Zealand's first Pacific woman MP. Luamanuao is the daughter of a pioneer P.A.C.I.F.I.C.A. Inc. stalwart, and our members proudly supported her campaign. Luamanuao successfully contested the Mana electorate in the 2002 election, and served as MP for Mana until 2010.

Continued on page 6

Continued from page 5

Luamanuvao became the first Pasefika-Samoan Dame in 2018. Three other Pacific women MPs have since been elected, each with strong links with P.A.C.I.F.I.C.A. Inc.: Carmel Sepuloni, Poto Williams and Jenny Salesa. Our members are also winning seats on city councils, local boards and hospital boards and importantly, taking Pacific and family issues into these forums.

Educational scholarships for women and girls continues to be a priority for our organisation. A P.A.C.I.F.I.C.A. Inc. Restart Tertiary Grant was introduced alongside the P.A.C.I.F.I.C.A. Inc.

Secondary School Scholarship, with the aim of supporting young mothers and elder mamas undertaking studies to improve the wellbeing of their families. Branches from the three regions pledged \$10k each to the Tertiary Grant, and vigorous fundraising saw the target of \$30,000 achieved in 2012. The Lower Hutt City Council also agreed to an annual P.A.C.I.F.I.C.A. Inc. Scholarship for persons from their region (although unfortunately to date other city councils have not yet followed this lead).

P.A.C.I.F.I.C.A. Inc. has also begun to participate more on the national and international

gender equity scene. In 2005 a P.A.C.I.F.I.C.A. Inc. delegation attended the Janus Women's Conference, where the Christchurch Branch launched their publication *Mama Rules: Pacific Women Leaders*, a resource that was still being widely used in 2018. In 2007, National president Dr. Diane Mara went to the 51st United Nations Commission on the Status of Women (CSW) in New York, where she attended both the governmental and NGO conferences. In July 2007, together with delegates from the Maori Women's Welfare League and Shakti, she attended the Expert Panel session at which New Zealand reported

on its performance in relation to the UN Convention on the Elimination of all Forms of Discrimination against Women (CEDAW), and she also heard the reports from other Pacific countries. In 2018 Tagaloatele Professor Peggy Fairbairn-Dunlop represented P.A.C.I.F.I.C.A. Inc. in a panel debate on CEDAW at the Auckland Council. In 2019, National Executive submitted an application for consultative status to the United Nations Economic and Social Council (outcome currently pending). P.A.C.I.F.I.C.A. Inc. are also collaborating with the Human Rights Commission in supporting and endorsing the National Pay Transparency campaign.



P.A.C.I.F.I.C.A. Inc. AGM
1983



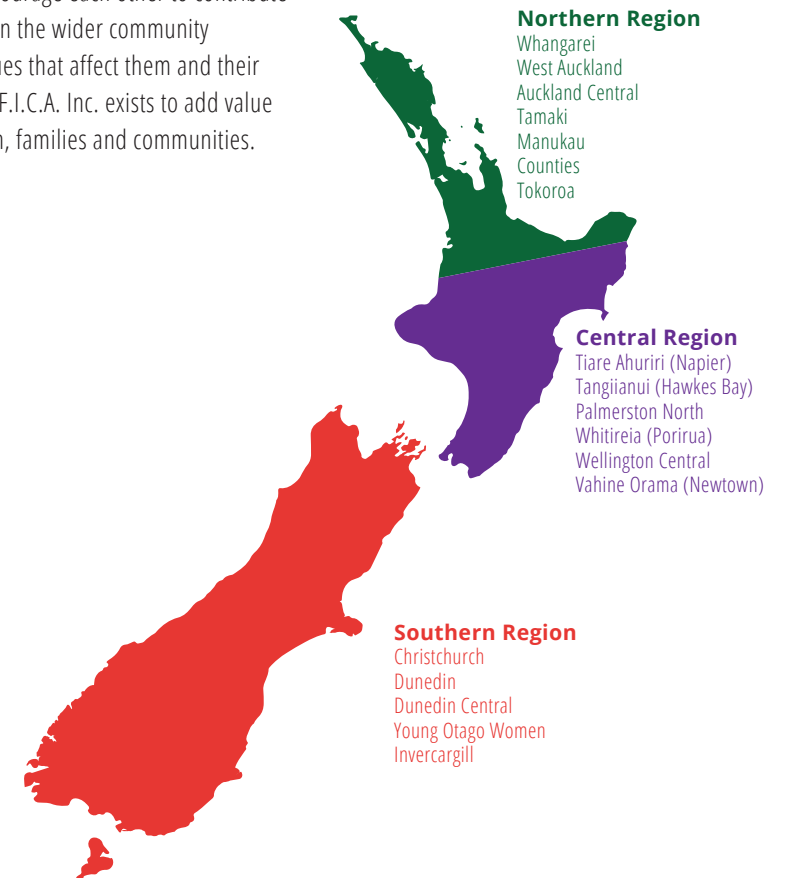
P.A.C.I.F.I.C.A. Inc. Today.

There are currently 18 branches across the country, from Whangarei all the way down to Invercargill. Branches have elected officers and meet monthly or as/when they choose. Each branch is relatively autonomous/independent and operate in response to member's involvement and community priorities, within P.A.C.I.F.I.C.A. Inc.'s wider aims and objectives.

Each branch has either a uniform or distinguishing colour that is worn proudly to national conferences and at events in the community. Branches exist to create opportunities for Pacific women to support one another and encourage each other to contribute and participate in the wider community especially in issues that affect them and their families. P.A.C.I.F.I.C.A. Inc. exists to add value to Pacific women, families and communities.

All branches are affiliated to the national body through payment of an annual membership fee. P.A.C.I.F.I.C.A. Inc. has a regional structure where branches within each of the three regions Northern, Central and Southern are coordinated by a regional vice-president. The three regional vice-presidents hold elected positions on the National Executive committee.

Each year a levy of \$200 is paid to the National Executive by each branch. In addition, a membership fee is also paid to the national body for each financial member.





Past presidents of P.A.C.I.F.I.C.A. Inc.

Eletino Paddy Walker

Louisa Crawley

Eti Laufiso

Poko Morgan

Tepaeru Tereora

Tafa Malifa-Poutoa

Dr. Jean Mitaera

Dr. Diane Mara

Sally Dalhousie

Tagaloatele Professor Peggy Fairbairn-Dunlop

Caren Rangi

Tofilau Bernadette Pereira



Vision.

To be the premier voice of the Pacific that New Zealand government and community rely on for local, national and global Pacific Island womens' issues and perspectives.

Mission.

We are motivated to be connected and involved with Pacific Island women's culture, family and people. Our aspirations are diverse, yet through these we all aspire to share, care for, and support belonging among our Pacific Island sisters and our communities.

Our aspirations are to grow P.A.C.I.F.I.C.A. Inc., achieve education and training to serve in our communities, and develop entrepreneurship that shares all things Pacific, including Pacific lifestyles, with our sisters and communities.

Objectives.

To provide opportunities for Pacific women to contribute effectively to the cultural, social, economic and political development of Aotearoa New Zealand and its people.

To give Pacific women opportunities to plan and work together for the stability and development of themselves, their families, their communities and so contribute to the development of the country.

To create ways and means for Pacific women to overcome barriers that may hinder their ability to reach their full potential.

To inspire unity among women of Pacific descent in the furtherance of these aims so that all can speak with one voice in true fellowship.

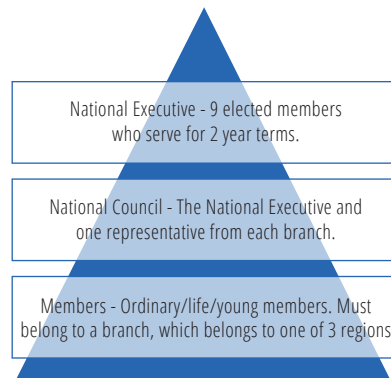
To initiate and promote policies and programmes that support Pacific women to take active decision-making roles in their lives.

To initiate and support programmes promoting the education, welfare, health and social development of Pacific Islands and Pacific family life.

To promote understanding between women of all races.

Structure and Membership.

For the purposes of managing and effectively co-ordinating the activities of P.A.C.I.F.I.C.A. Inc. there are:



New members

A new member must join a P.A.C.I.F.I.C.A. Inc. affiliated branch and usually joins the branch that is closest geographically to her. Please contact your nearest Vice President (pg 10) for more information.

A new member shall be proposed and seconded by two ordinary members of a Branch. With the agreement of the Branch and upon payment of the annual subscription the new member shall become an ordinary member of P.A.C.I.F.I.C.A. Inc.

To inquire about becoming a new member click [here](#).

Ordinary members

P.A.C.I.F.I.C.A. Inc. welcomes women of all races, religions and backgrounds to its membership. In line with P.A.C.I.F.I.C.A. Inc.'s objectives, P.A.C.I.F.I.C.A. Inc. actively supports, develops and promotes the leadership of Pacific women within the organisation. Ordinary members are those members who have paid their annual subscription by 31 August each financial year and belong to an affiliated Branch of P.A.C.I.F.I.C.A. Inc. All ordinary members shall be entitled to vote at their Branch meeting, their Regional Mini-Conference and the National Annual General Meeting of P.A.C.I.F.I.C.A. Inc.

An ordinary member of Pacific descent only shall be entitled to hold office at Branch level. An ordinary member of Pacific descent who has or currently holds office at Branch level shall be entitled to hold office on the National Executive Committee.

Ordinary members must ensure that their annual subscription is current and paid-up, so that they may exercise their full privileges as ordinary members.

Transfer of membership. A member may transfer from one P.A.C.I.F.I.C.A. Inc. Branch to another provided the member obtains a letter from the Secretary of her former Branch stating that she has paid her annual subscription for the current year.

Termination of Membership

Notice of resignation from P.A.C.I.F.I.C.A. Inc. should be given in writing to the Branch Secretary. The resignation will be effective from the date at which the resignation is presented and accepted by the Branch at its Branch meeting. The Branch Secretary shall notify the National Executive Committee of the member's resignation and the date and meeting at which the resignation was presented and accepted.

If any member has acted in a way that is harmful to P.A.C.I.F.I.C.A. Inc., that member may be expelled by a decision made at a duly constituted Council or Annual General Meeting of P.A.C.I.F.I.C.A. Inc., provided that: P.A.C.I.F.I.C.A. Inc. notifies the member concerned of the proposed expulsion and the reasons for it; and The member concerned is given an opportunity to be heard at the meeting of P.A.C.I.F.I.C.A. Inc. concerning the expulsion. The expulsion of a member shall be effective immediately upon the passing of such resolution.

Member Benefits at a glance

- The opportunity to be a part of a vibrant and supportive P.A.C.I.F.I.C.A. Inc. womens network
- The opportunity to meet with like-minded woman who share similar values
- Opportunity to attend mini and annual conference events
- A platform to utilize and enhance skills and abilities to further Pacific initiatives. National Executive and branches are often involved in projects regarding pacific health, education, leadership etc. Workshops and information events are run regularly.
- A sense of identity and belonging through gathering together for Pacific social and cultural events
- Forefront for information regarding pacific women's issues/news
- Generational Mentor / Mentee relationships
- Being part of a New Zealand government recognised NGO

Finance

Annual Subscription. Annual subscriptions shall be payable by each ordinary member each financial year. The National Treasurer must receive the annual subscription of each ordinary member by 31 August each financial year. The annual subscription fee is \$20 per ordinary member \$10 per youth member. Each branch then sets their own subscription fee for their membership for the year in addition to this.

Membership will be suspended if subscription is not paid by due date.



The National Executive Committee.

The National Executive Committee is the administrative and management body of P.A.C.I.F.I.C.A. Inc. It is comprised of the following elected members:

- National President
- Vice President – North Island (elected by Northern Region members)
- Vice President – South Island (elected by South Island members)
- Vice President – Central North Island (elected by Central North Island members)
- National Secretary
- National Communications Officer
- National Treasurer
- Assistant National Treasurer
- Young P.A.C.I.F.I.C.A. (elected by Young P.A.C.I.F.I.C.A. Inc. members)

Election of Officers

Ordinary members, who have held or currently hold a position of office in their Branch, may be nominated for a position on the National Executive Committee.

Nominations for any position on the National Executive Committee shall be made by any Branch in writing to the National Secretary at least twenty-eight days prior to the date fixed for the National Conference.

Nominations will be accepted from the floor only where a vacancy exists and no written nomination has been received by the Returning Officer, and, with the consent of the nominee.

By-elections. A by-election may occur where the office held by a National Executive Committee member is vacated before that member completes their full term of office. The National

Executive Committee will determine whether a by-election will be held. The National President may not hold any other office in P.A.C.I.F.I.C.A. Inc. during her term as National President.

National Executive Committee Members Terms of Office

All positions on the National Executive Committee are elected biennially at the National Annual General Meeting of P.A.C.I.F.I.C.A. Inc., for a term of two years.

The National President may hold office for a period of one term (two years) and not longer than two terms (four years).

The retiring National President may continue for one year as an advisor to the National Executive Committee. Her office shall be, 'Immediate Past President.



Annual Conference and General Meeting.

The AGM is hosted by a P.A.C.I.F.I.C.A. Inc. branch and is usually held in February. It is a forum to discuss and decide on initiatives that further the objectives of the organisation.

All financial and life members of the organisation have the right to attend and participate in the AGM (which is a distinct right from attendance at the Conference). Each member has one vote.

The Conference is an opportunity for education, promotion and development on issues and skills that contribute to the objectives of the organisation.

Conventionally, the National AGM/Conference is held over three days (a weekend), the AGM on the Saturday.

Regional Mini Conference.

Under the leadership of regional Vice Presidents, Branches will gather within their regions at their annual Regional Mini Conference. The Regional Mini Conference provides an opportunity for the region to celebrate and caucus on issues that are relevant to their region.

Purpose:

- Celebrate and inspire P.A.C.I.F.I.C.A. Inc. sisterhood, unity and fellowship.
- Conduct the business of P.A.C.I.F.I.C.A. Inc.
- Receive Regional Vice President (RVP) and Branch reports
- Discuss, promote, debate, lobby and strategise issues of importance to Pacific women, families and communities
- Develop their knowledge of P.A.C.I.F.I.C.A. Inc.'s organisational structure, policies, meeting procedures and members
- Provide direction to the RVP on regional priorities which may need to be taken to the National Executive, Council Meeting or the Annual General Meeting (AGM) of P.A.C.I.F.I.C.A. Inc.
- Discuss remits.
- Receive and discuss nominations for Life Memberships and Service Awards
- Provide an opportunity for professional/skills development activities.



Our Network of key stakeholders.

As a National organisation P.A.C.I.F.I.C.A. Inc. participates with other like-minded Pacific organisations in maintaining relationships. Representatives of P.A.C.I.F.I.C.A. Inc. meet regularly with the Ministry for Women (MfM), Ministry of Pacific Peoples (MPP).

A close relationship is maintained with the Maori Women's Welfare League (Te Roopu Wahine Maori Toko i te Ora) and other women's organisation such as Pan Pacific South East Asia Women's Association (PPSEAWA), National Advisory Committee on the Employment of Women (NACEW) and the National Council of Women in New Zealand (NCWNZ).

P.A.C.I.F.I.C.A. Inc. works alongside the New Horizon's for Women's Trust and supports the National Screening Unit of the Ministry of Health.

P.A.C.I.F.I.C.A. Inc. have applied for consultative status with the United Nations Economic and Social Council.

Further Information.

National Executive pacificaexec@yahoo.com

Website <http://www.pacifica.org.nz>

Facebook <https://www.facebook.com/PACIFICA.INC/>

Regional Vice Presidents

Northern Region: Elizabeth McEwan – elizabethpacifica@gmail.com

Central Region: Dr. Ali'itasi Su'a-Tavila – docsuatavila1@gmail.com

Southern Region: Alexandria Tino – alex_tino80@yahoo.com.au

PACIFICA Song.

We sing our song, our song of PACIFICA
We come from Islands, both near and far
We came to build our homes in Aotearoa
Our hopes and our dreams are in this land.

We come from Tokelau, Niue and Samoa
Cook Islands, Tahiti, Fiji and Tonga too
We come together to help one another
To reach all the aims of PACIFICA.

PACIFICA – Inspiring Faith
PACIFICA – Concern for all
Our hearts lift high, in unity
By love we live, in harmony

We come from Tokelau, Niue and Samoa
Cook Islands, Tahiti, Fiji and Tonga too
We come together, to help one another
To reach all the aims of PACIFICA

PACIFICA, PACIFICA, PACIFICA, PA-CI-FI-CA

Composed by Eleitino Patricia Walker
(Inaugural National President)



